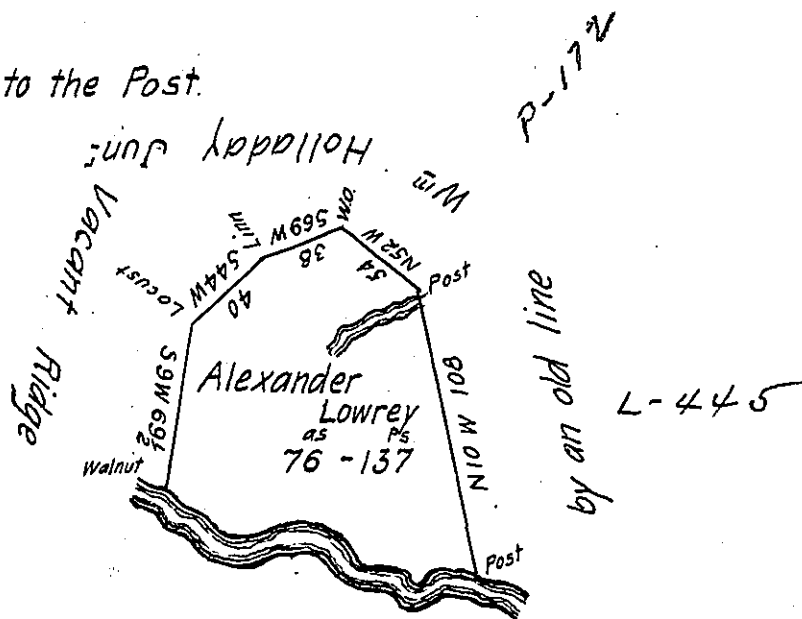


Courses & Distances
from the Walnut down

the Frankston Branch to the Post.

- S 60 E 22½
- S 43 E 16
- N 63 E 31
- S 78 E 21
- S 38 E 20
- S 89 E 20
- S 7 E 09
- N 39 E 14
- S 89 E 15
- 168½



Situate in Frankston township Huntingdon County adjoining
 on the North Side of the Frankston Branch of Juniata & Joining
 Franks Old Town Tract Containing 76^{as} 137^{ps} Surveyed the 2^d
 day of October 1787 in pursuance of a Warrant dated the
 21st Day of August 1773

John Canan D.S.

To John Lukens Esq^r S.G.

IN TESTIMONY that the above is a copy of the original remaining on file in
 the Department of Internal Affairs of Pennsylvania, made
 conformably to an Act of Assembly approved the 16th day of
 February, 1833, I have hereunto set my Hand and caused
 the Seal of said Department to be affixed at Harrisburg,
 this first day of September 1905.

Isaac P. Brown
 Secretary of Internal Affairs.